

Our Mission:

- We will provide a **vital service** to **infrastructure installations** throughout Victoria.
- This service will be through **the supply and maintenance management** of **critical process control equipment** at these installations.
- Our customers will **describe** us as a **lean, efficient** and **responsive team of people**.

Job Description:

- Storm water isolation control system for environmental wetlands.

The Issue

- ❖ Original isolation system was installed incorrectly without a mounting plate.
- ❖ High cost of ownership due to
 - poor maintainability of original design
 - Costs associated with pumping out the wetland if the valve fails.

Key Performance Indicators.

The new system must meet the following KPI's

- ❖ Allow quick and easy removal of the valve for maintenance.
- ❖ Allow easy access to open or close the valve without entering the confined space area.
- ❖ Provide a maintenance and support with locally available spare parts..

The Solution.

Tyco Flow Maintenance was contracted to;

- ❖ Remove the old valve system,
- ❖ Design, fabricate, supply, install and commission the new system
- ❖ Maintain the new system.



Figure 1.0 Primary drain point with Tyco Keystone Knifegate valve and “external” manual operation.

Confined Space OH&S Requirements

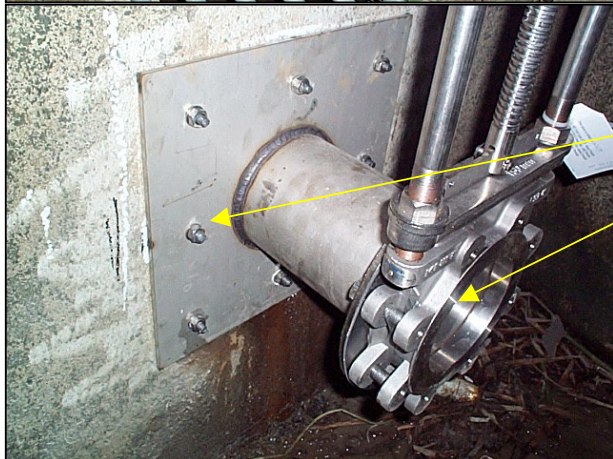


Figure 2.0 Valve mounting assembly.

Wall Mount plate, Spool & Flange assembly.

316 Stainless Steel Knifegate valve