



Flow Control



Namur Mounted Valve 6ANSS5/2

Product Description

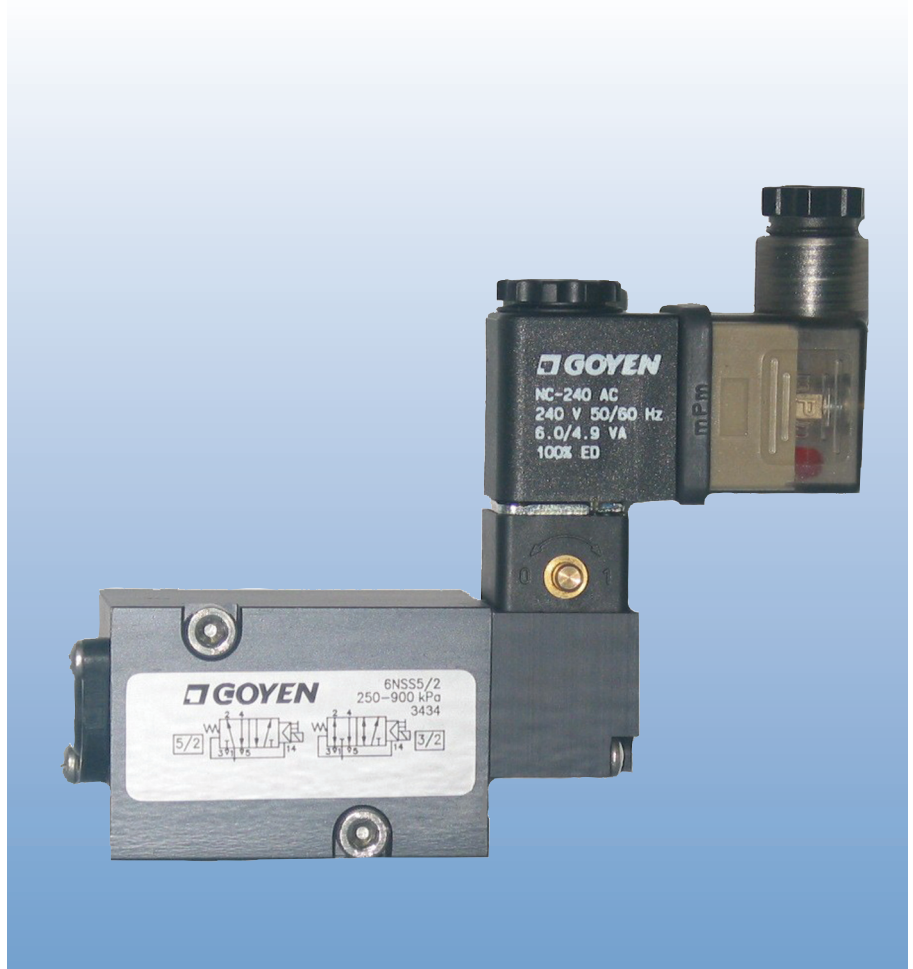
Pneumatic directional control valve. Spool type valve actuated by an indirect solenoid pilot. Spring return, internal air assisted. Valve can be configured for either 5/2 operation, or 3/2 operation (normally closed) with free venting between the inactive ports.

Typical Applications

These valves are typically mounted directly to pneumatic driven rotary actuators. The valves can control either double acting or single acting actuators.

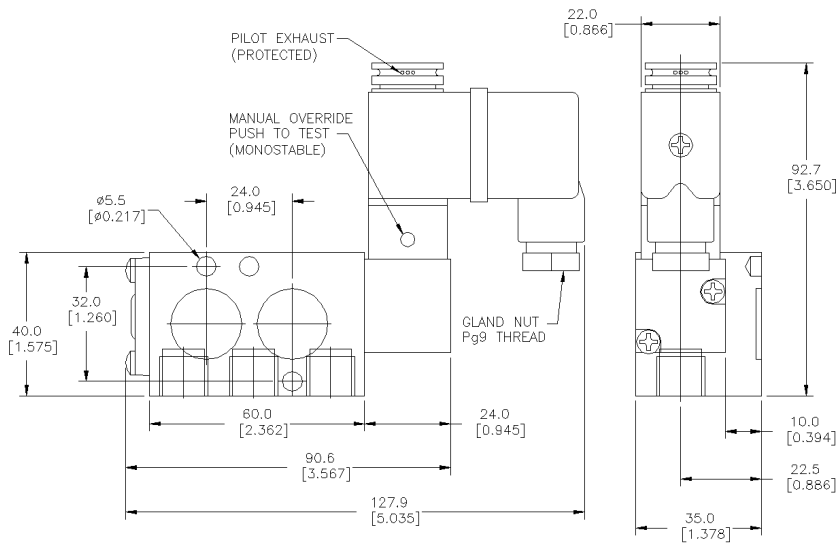
Principle of Operation

Control air is directed to and from the actuator by a sliding spool in the valve. In 5/2 operation mode, when the coil is de-energised, the supply air (valve port 1) is directed to one side of the actuator (valve port 2) while air from the opposite side of the actuator is exhausted back through the valve (from port 4 to port 5). When the coil is energised, pilot air (supplied internally from port 1) switches the spool position. The airflow to and from the actuator is reversed. That is, supply air is directed to valve port 4 while the exhaust air travels from port 2 to port 3. In 3/2 operation mode, the spring side of the actuator is continuously vented to atmosphere through ports 2 and 3. When the coil is de-energised, supply air is blocked and the actuator air is exhausted from port 4 to port 5. When the coil is energised, supply air is directed to the actuator through port 4. Exhaust flow control fittings can be supplied with the valve to enable speed control of the actuator. For both 3/2 and 5/2 operating modes, each direction of the actuator can be independently controlled. The sintered bronze filter prevents particulate from entering the actuator's spring chamber when the valve is in 3/2 mode.



Construction

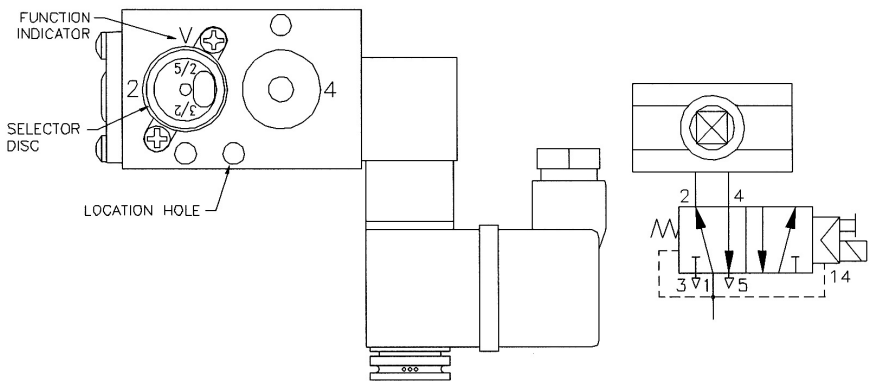
Valve body & pilot ends:	Aluminium - anodized black
End cover, valve spool, flip disc:	Acetal resin
Port spacers, pilot body & exhaust nut:	Polyamide (PA6)
Armature tube:	Brass
Valve o-rings & port seals:	Nitrile rubber (NBR)
Pilot valve seals:	FKM (Viton)
Return spring:	Music wire - Cragol treated
Plunger & screws:	Stainless steel



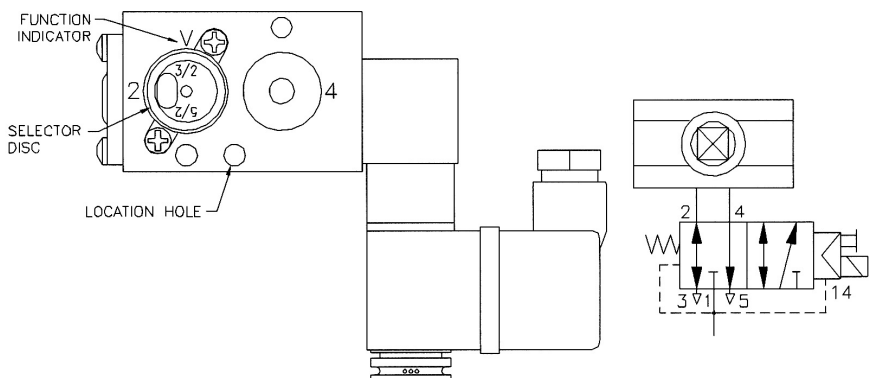
Underside view of Valve

Valve can convert into either 3/2 function or 5/2 function by rotating the selector disc 180 degrees.

5/2 Operation



3/2 Operation



Performance

Medium:

Compressed air, filtered & lubricated

Working Pressure Range:

250 to 900 kPa (36-130 psi)

Ambient temperature:

-15 to +50°C (5 to 122°F)

Fluid temperature:

+5 to +50°C (41 to 122°F)

Fluid Connections:

1/4 NPT

Flow characteristic Cv:

0.9

Manual over-ride:

Monostable (push to test)

Spare Parts

- Replacement Solenoid Coil only

Bill of Material

- 1 x Valve
- 1 x Selector disc - assembled in 5/2 operating mode
- 2 x Mounting screws - 10 x 32 UNF x 1.5" long socket head
- 1 x location grub screw 10 x 32 UNF x 3/8 long
- 2 x Mounting o-rings - 16mm ID x 2.0 section
- Coil and DIN socket order separately

Coil Details

Duty Cycle: 100%

Insulation class: F (155°C)(311°F)

Standard Coil: (LED)

Protection Class: EN60529 IP65

Connection: EN175301-803 (ex DIN 43650 B) Pg9 gland, LED indicator

Explosion Proof Coil (ex)

Protection Class: EXM11T6 IP65

Certificate: IECEXPTB 04.0002x

Connection: Pg9 gland with 1.2m cable

Coil voltage/Part numbers

NC - (Voltage)	Connector
12 AC	LED
12 DC	
24 AC	EX
24 DC	
110 AC *	
240 AC	

* For 48 DC. order 110 AC.

Coil is marked as dual voltage